

| ID                       |            |
|--------------------------|------------|
| Access for Disabled      | ✓          |
| Beach Front - Lagoon     | ✓          |
| Class                    | 4 Stars    |
| Facilities               |            |
| Art Courses              | ✓          |
| Baby sitting             | On Request |
| Boutiques                | ✓          |
| Business Center          | ✓          |
| Electricity              | 220V-60Hz  |
| Fine Cooking Courses     | ✓          |
| Ice machines             | ✓          |
| Laundry service          | ✓          |
| Sandy Bottom Pool        | ✓          |
| Tour Desk                | Concierge  |
| Room Facilities          |            |
| Air Conditioning         | ✓          |
| Balcony                  | ✓          |
| Bathrobes                | ✓          |
| Bathtub                  | ✓          |
| Cable TV - Movie Channel | ✓          |
| CD/DVD Player            | ✓          |
| Ceiling Fan              | ✓          |
| Coffee / Tea Facilities  | ✓          |
| Hair Dryer               | ✓          |
| Internet access          | Wifi       |
| iPod Station             | ✓          |
| Mini Bar                 | ✓          |
| Radio                    | ✓          |
| Safety box               | ✓          |
| Shower                   | ✓          |
| Telephone                | ✓          |
| Free Activities          |            |
| Aquagym                  | ✓          |
| Beach Towels             | provided   |
| Kayaks, canoes           | ✓          |
| Petanque                 | ✓          |
| Snorkeling Equipment     | ✓          |
| Tennis court             | ✓          |
| Tennis table             | ✓          |
| Volleyball               | ✓          |

Slightly eccentric, Le Méridien Tahiti is the only hotel located on a beautiful white sandy beach and a turquoise lagoon, with view on Moorea island.

This authentic resort, having nothing to envy of the islands hotels, completely renovated in 2010, will delight all types of clients, especially on stays longer than one night.

It is located 30 minutes from the golf Atimaono (18 holes), the Botanical Garden and the Gauguin Museum, just few steps from the small shopping center Tamanu and the Museum of Tahiti & her islands. Downtown Papeete is about 20 minutes from the hotel : shuttle service by "truck", transportation typical of Tahiti, is available twice a day.



*Le* **MERIDIEN**  
TAHITI



### Location

15 minutes from airport  
20 minutes from pier/Papeete  
Paying Shuttle Bus to downtown Papeete available (to book at front desk)

### Credit Cards

Visa, Mastercard, American Express, Diners Club, Travellers Cheque

### Services

|    |  |           |
|----|--|-----------|
| 25 | Garden Room                            | 2012/2013 |
| 6  | Garden Room Family                     | 2012/2013 |
| 67 | Deluxe Lagoon/Ocean View Room          | 2012/2013 |
| 4  | Deluxe Lagoon/Ocean View Room Family   | 2012/2013 |
| 27 | Panoramic Lagoon View/Ocean Front Room | 2012/2013 |
| 12 | Overwater Bungalow                     | 2012/2013 |
| 5  | Junior Suite                           | 2012/2013 |
| 2  | Senior Suite                           | 2012/2013 |
| 1  | Presidential Suite                     | 2012/2013 |



### Remarks

SEASON 2011  
From April 01st, 2011 To March 31st, 2012

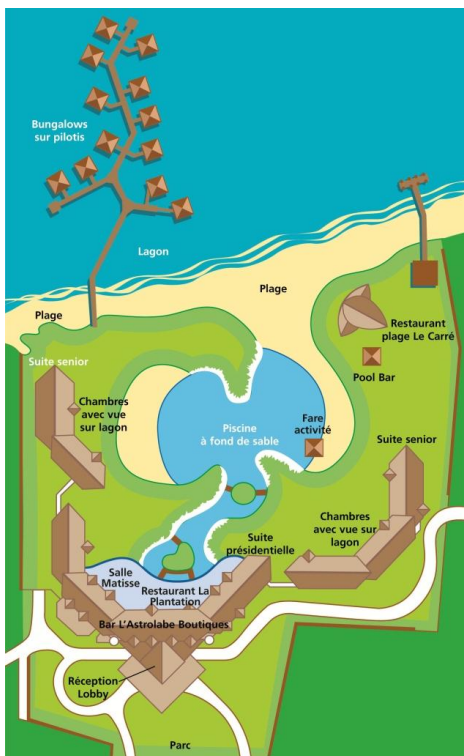
SEASON 2012  
From April 01st, 2012 To March 31st, 2013

### Wedding and romance information

In Room Touches as french sweet pastries, fruit basket, Red Wine, Bottle of Champagne... - from 10 to 105€

Romantic Dinners as Candlelight Dinner under the Stars - from 147€ per person

Polynesian Weddings ceremonies with traditional songs and dances - from 1250€



### Dining information

**LA PLANTATION** Local & French Cuisine & Polynesian Buffets, Central - 250 seats :  
 Breakfast : Monday - Saturday 06H00 - 10H00 ; Sunday 06H00 - 11H00  
 Dinner on Sunday, Monday, Tuesday, Thursday 19H00 - 22H30  
 Dinner on Wednesday, Friday, Saturday 19H00 - 22H00  
 Seafood Buffet with Polynesian show on Friday night.

**LE CARRE** Fine Cuisine, Beachfront - 60 seats :  
 Lunch : Monday to Friday 12H00 - 14H00 ; Saturday & Sunday 12H00 - 15H00  
 Dinner : 19H00 - 22H00

**ROOM SERVICE** available from 05H30 to 11H00

#### MEAL PLAN DETAILS

Half Board = Breakfast + 3course Dinner at La Plantation

2011 Full Board = Breakfast + 2course Lunch at Le Carré + 3course Dinner at La Plantation  
 2011 All Inclusive, mini 3night stay = Full Board with "A la carte" meals, room service, snack or buffet dinner with drinks included (soda, juice, mineral water and beer).

2012 Full Board = Breakfast + 2course Lunch & 3course Dinner at La Plantation

2012 All Inclusive, no mini stay = Breakfast + 3course Lunch & 3course Dinner at Le Carré + All day long drinks (soda, juice, mineral water and beer).

### Bars information

**POOL BAR:**  
 10H00 to 22H30 for the Bar ; 11H00 to 18H00 for the snack

**ASTROLABE:**  
 16H00 to 00H00

### Conferencing information

The hotel can accommodate up to 500 persons - 3 Conference Rooms with all A/V equipment

### More Information

#### TRANSFERS & WELCOME INFO

Transfers by bus or private car with our services.

Shuttle to Papeete by "truck" available twice a day - 20 min.

Welcome refreshing towel upon Arrival, specified Welcome Amenities may be replaced without notice by others with same value.

Check In 14H00 - Check Out 11H00

#### HOTEL ACTIVITIES

Le Méridien Tahiti opens for his guests doors of cultural and rewarding spaces.

"L'Atelier" will receive you to discover local work of art. You will have the opportunity to observe some artists practising on the spot and practise yourself during workshops. Opening hours : Monday -> Friday 9H00 - 18H00 & Saturday 9H00 - 12H00

"L'Atelier du Chef" invites you to create your own meals during cuisine lessons, which will excite taste buds of gourmets.

Savory Delights Courses Thursday & Saturday 10H00 - 12H00 ; Sweet Delights Courses Sunday 14H00 - 16H00

\*\*\* NEW \*\*\* Wellness Center (open since October 2011)

Daily: on appointment from 08h00 à 19h00

Massages & Body and Facial Treatments

Free activities listed above.

Concierge 24/24

#### Internet Access

-Wireless High Speed Internet Access in All Guest Rooms 34€ per day

-Wireless High Speed Internet Access in Public Areas

We strongly recommend that you pre-book some activities in advance, only way to guarantee availability.

#### CHILDREN FACILITIES

Dependable babysitting services at a rate of 13€ per child per hour (17€ during bank holidays). Please note that it is recommended that babyitters be booked at least 48 hours in advance.

### Garden Room

2012/2013

Interior: 48 m<sup>2</sup>

Large sun drenched bedroom - located on the first or the second floor of the resort, offering breathtaking views over lush gardens, banana and coconut trees, tropical colourful Tipanier and Tiare flowers. All rooms also overlook a 2000m<sup>2</sup> (21000sqft) sandy bottom swimming pool -unique in the south Pacific.

Entirely refreshed in 2010 with warm colours and Polynesian touches, garden rooms comprise a 48m<sup>2</sup> bedroom, a large bathroom with double sink, separate bath, shower and toilets and a large terrace or balcony.

Facilities accessible to persons with reduced mobility.

2011 Name - Garden View Room

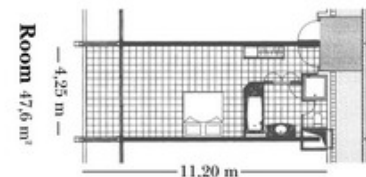
2012 Name - Garden Room

Bed Configuration: 1 King bed + 1 sofa bed or 2 Twin Beds

#### Occupancy Details

Max Number Of Adults: 3

Max Number Of Adults and Child(ren): 3



### Garden Room Family

2012/2013

Interior: 48 m<sup>2</sup>

Same as Garden Room, but with 2 queen size beds.  
Not equipped for disabled guests.

2011 Name - Garden Room with Max. Occupancy 3A or 2A + 2A

2012 Name - Garden Room Family. Max. Occupancy specified below.

Bed Configuration: 2 double beds

#### Occupancy Details

Max Number Of Adults: 4

Max Number Of Adults and Child(ren): 4

### Deluxe Lagoon/Ocean View Room

2012/2013

Interior: 48 m<sup>2</sup>

The 48m<sup>2</sup> (520sqft) deluxe ocean view rooms- located from 2nd to 4th floors, have been entirely renovated in 2010 and feature contemporary neutral-toned furniture and linens, soothing lighting and authentic Polynesian touches including authentic "tapa" cloth lights and tables shaped like surfboards, hard wood floor, inviting "Meridienne" sofa bed for an ambience energizing and relaxing

These rooms offer generous views over the white sandy beach and lush gardens of the resort, the crystal clear lagoon of Tahiti and the sister island of Moorea.

Facilities accessible to persons with reduced mobility.

2011 Name - Deluxe Lagoon View Room

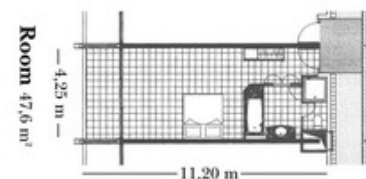
2012 Name - Deluxe Ocean View Room

Bed Configuration: 1 King bed + 1 sofa bed or 2 Twin Beds

#### Occupancy Details

Max Number Of Adults: 3

Max Number Of Adults and Child(ren): 3



### Deluxe Lagoon/Ocean View Room Family

2012/2013

Interior: 48 m<sup>2</sup>

The only difference between the Family and the standard version of the Deluxe Lagoon/Ocean View Room is the bed configuration.  
Not equipped for disabled guests.

2011 Name - Deluxe Lagoon View Room Family, Max. Occupancy 3A or 2A + 2C  
2012 Name - Deluxe Ocean View Room Family, Max Occupancy specified below.

Bed Configuration: 2 double beds

#### Occupancy Details

Max Number Of Adults: 4

Max Number Of Adults and Child(ren): 4

### Panoramic Lagoon View/Ocean Front Room

2012/2013

Interior: 48 m<sup>2</sup>

Located on the top floors, with 180° breathtaking views over the lagoon and the sister island of Moorea, the 48m<sup>2</sup> (520 sqft) deluxe panoramic room has been entirely re-designed in 2010 and features contemporary neutral-toned furniture and linens, soothing lighting and authentic Polynesian touches including authentic "tapa" cloth lights and tables shaped like surfboards, hard wood floor, inviting "Meridienne" sofa bed.

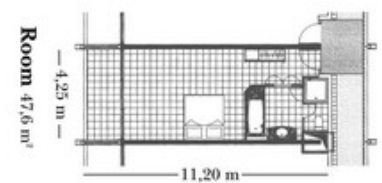
Unique amenities: Illy expresso coffee machine, round trip to the city center and complimentary bottle of water complement the "panoramic view experience"

Bed Configuration: 1 King bed + 1 sofa bed or 2 Twin Beds

#### Occupancy Details

Max Number Of Adults: 3

Max Number Of Adults and Child(ren): 3



### Overwater Bungalow

2012/2013

Interior: 56 m<sup>2</sup>

Water depths : around 2,50 meters

Suspended over the crystal clear lagoon of Tahiti, the overwater bungalow offers the ultimate experience in Polynesia: luxurious yet traditional Tahitian accommodation and breathtaking views on a rich coral garden, colourful fishes and marine life.

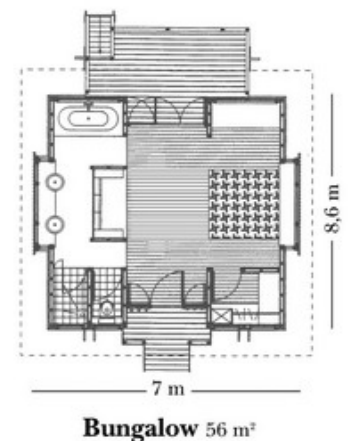
These thatched roof bungalows feature local woven palm walls, romantic canopy bed, lovely timber floor, large terrace, Polynesian style bathroom and open views to the reef. Access to the lagoon by the end of pontoon.

Bed Configuration: 1 King bed + 1 sofa bed

#### Occupancy Details

Max Number Of Adults: 3

Max Number Of Adults and Child(ren): 3



### Junior Suite

2012/2013

Interior: 84 m<sup>2</sup>

Ideally located in the central part of the resort, the Junior Suites offer exquisite views over the beautiful tropical gardens and the breathtaking turquoise waters of the lagoon of Tahiti.

The 84m<sup>2</sup> (930sqft) contemporary junior suites are nicely appointed with warm timber floor and exotic wood furniture, a spacious private terrace - set-up as an open air living room, a large air conditioned king bedded bedroom and fully equipped bathroom: the utmost combination of luxury and local Polynesian touches.

Luxury in-room amenities comprise: 2 flat screen TVs with video-on-demand and music channels, Le Meridien signature bed, "Illy coffee" espresso machine.

Bed Configuration: 1 King bed + 1 sofa bed

### Occupancy Details

Max Number Of Adults: 3

Max Number Of Adults and Child(ren): 3



### Senior Suite

2012/2013

Interior: 131 m<sup>2</sup>

Quietly located at the very end of the building, both 131m<sup>2</sup> (1400 sqft) senior suites offer dramatic views over the crystal clear lagoon of Tahiti and the sister island of Moorea, and are the most luxurious accommodation on the island, modern yet Polynesian. Large contemporary living room with unobstructed vista over the Pacific Ocean, comfortable bedroom with exotic designs, are some of the luxury features of the senior suites.

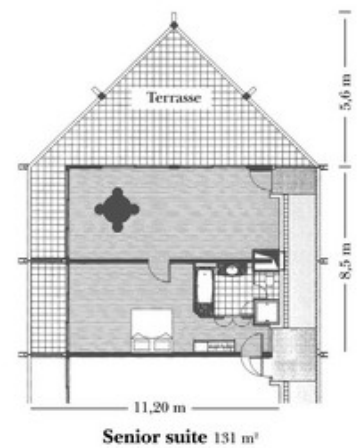
Luxury in-room amenities comprise: 2 flat screen TVs with video-on-demand and music channels, Le Meridien signature bed, "Illy coffee" espresso machine, outside terrace furniture.

Bed Configuration: 1 King bed + 1 sofa bed

### Occupancy Details

Max Number Of Adults: 3

Max Number Of Adults and Child(ren): 3



### Presidential Suite

2012/2013

Interior: 179 m<sup>2</sup>

Located on the top floor of the main building, the Presidential suite at le Meridien Tahiti offers a unique and unsurpassed experience on the island of Tahiti

The 179m<sup>2</sup> (1930 sqft) opulent suite features exquisite views over exotic gardens, crystal clear lagoon and deep blues of the pacific Ocean. From a large outside fully furnished terrace to the more intimate bedroom with canopy bed and the sun drenched living room, you will enjoy every minute of your stay.

Among others, luxury in-room amenities comprise: 2 flat screen TVs with video-on-demand and music channels, Le Meridien signature bed, wifi, separate bathtub & shower, double sink, "Illy coffee" espresso machine, outside terrace furniture, walk-in closet.

Bed Configuration: 1 King bed + 1 sofa bed

### Occupancy Details

Max Number Of Adults: 3

Max Number Of Adults and Child(ren): 3

